



FY2020 Polis Center Annual Report

The Polis Center
works with our partners
to define, measure, and improve
community health, well-being,
and resilience.

INTRODUCTION

The Polis Center observed its 30th anniversary during FY2020, and we find our motto, “We bring things into perspective,” more apt than ever. From our beginning in 1989, our primary aim has been to build understanding of issues from a variety of perspectives. We help create a vision of the common good and realize this vision with practical tools and methods.

One way we have worked to bring perspective to the communities of Central Indiana and beyond is by developing a wide array of information systems that provide data and analysis on the issues that face us. We began early with *Encyclopedia of Indianapolis* (1994) and the SAVI Community Information System (1995-present).

More recently, *IndyVitals* (2016), and now the all-digital *Encyclopedia of Indianapolis*, set to launch in 2021 as a bicentennial legacy project, are part of the information web we are creating. Our multiyear Project on Religion and Urban Culture (1996-2002) was a path-breaking study of the intersection of religion and community in Indianapolis. In June 2020, we received another major grant to examine the role of congregations as they confront major social and economic changes, including a global pandemic.

The Spirit & Place Festival, an initiative that stemmed from the first religion project will celebrate its 25th year in 2021, now as a separate program in the IU School of Liberal Arts. It serves as another example of how we have worked with partners throughout Central Indiana to develop social and human capital.

Our focus has always been on local communities, in both Indiana and elsewhere, and we have long employed geographic information systems (GIS) as a way to integrate, manage, and visualize the rapidly growing amount of information on the places we live. Today, we use these technologies and our large expert networks to support disaster

mitigation, population health management, community development, and quality-of-life efforts, always in collaboration with community partners. Considered separately, each of these areas affects our daily lives; collectively, they are in fact interlinked, with developments in one area influencing actions and choices in another area. Our goal is to use our work in these fields to help Indiana communities become more resilient as we face the challenges of the next several decades.

On July 1, 2020, the Polis Center became part of the IUPUI School of Informatics and Computing. Aligning the Polis Center with the School of Informatics and Computing creates a direct connection to current and emerging fields in bioinformatics, data science, informatics, and health information management. It is a good move for us. We use advanced technologies to manage data, analyze problems, and disseminate information of value to our constituencies.

We will maintain connection with the IU School of Liberal Arts—and with all the other units at IUPUI and IU—because the world is complex and we need access to academic and community experts to understand its problems and potential solutions. We will remain community facing in our new home, collaborating with a wide range of organizations to define, measure and improve community health, well-being, and resiliency. We also will remain connected to our initial home in liberal arts while broadening our outreach to other disciplines and schools.

Most importantly, we will continue to collaborate with the wide array of community experts in Indianapolis, Central Indiana, and across the state and nation as together, we seek applied solutions to the problems and opportunities we face.

IUPUI

IUPUI



CONTENTS

| | |
|-----------------------------------|----|
| Executive Summary..... | 4 |
| Noteworthy Accomplishments..... | 5 |
| Community Informatics..... | 9 |
| Community Health Informatics..... | 18 |
| Geoinformatics | 25 |
| Spatial Humanities | 29 |
| Spirit & Place..... | 32 |
| Organizational Structure..... | 35 |
| Sustainability..... | 36 |
| Appendix A..... | 37 |

EXECUTIVE SUMMARY

The global pandemic dominated our attention in FY2020, at least since its arrival in the U.S. in early spring. In concert with the university and community, we responded with initiatives that addressed the challenges it posed, including the problems of racial, social, and economic inequalities that it revealed.

This work, although spurred by the pandemic, was not new to us. Rather, it allowed Polis to use its information and analytical capabilities to new ends.

We already were engaged in projects that tackled a number of similarly complex problems, ranging from the addictions crisis, domestic violence, poverty, aging, and disaster mitigation. Our talented teams in community informatics, geoinformatics, and community health informatics jointly and independently worked with university and community partners to develop creative solutions to these and other issues.

Our experts created an information hub with maps, data, and dashboards to help practitioners and policy makers during the COVID-19 public health crisis (<http://www.savi.org/coronavirus-data-hub/>).

We completed Phase 1 of the Indiana Data Partnership project for which we researched, analyzed, and developed visualizations of connections between service providers involved with the opioid epidemic.

We researched, analyzed, and drafted a report on the state of aging in Central Indiana.

We began an Indianapolis Bicentennial Legacy project to develop an interactive, digital *Encyclopedia of Indianapolis*, building on our 1994 print volume but taking full advantage of innovative ways to manage and share information on the Indianapolis metropolitan statistical area (MSA).

Our continuing collaboration with the Indiana Department of Homeland Security and the Indiana Department of Natural Resources, with which we are a federally recognized Cooperating Technical Partner (CTP), addressed ways to understand and mitigate the risk of flooding and to develop required mitigation plans in a number of Indiana counties.

We continued our work in partnership with community and university experts to produce dashboards, tools, visualizations, maps, and reports on a variety of subjects, from domestic violence in Marion County to educational achievement locally and philanthropic giving nationally.

We expanded research on poverty, family stability, and helped The Indianapolis City County Council understand what data reveals about the inequities faced by Black residents.

We completed the initial data gathering and analysis for a social risk isolation index for senior citizens, on the problems faced by senior citizens, completed Community Health Needs Assessments (CHNAs) for Parkview Health System and its regional hospitals in northwest Indiana, and developed interactive community profiles for three target communities in the Diabetes Impact Project-Indianapolis Neighborhoods (DIP-IN).

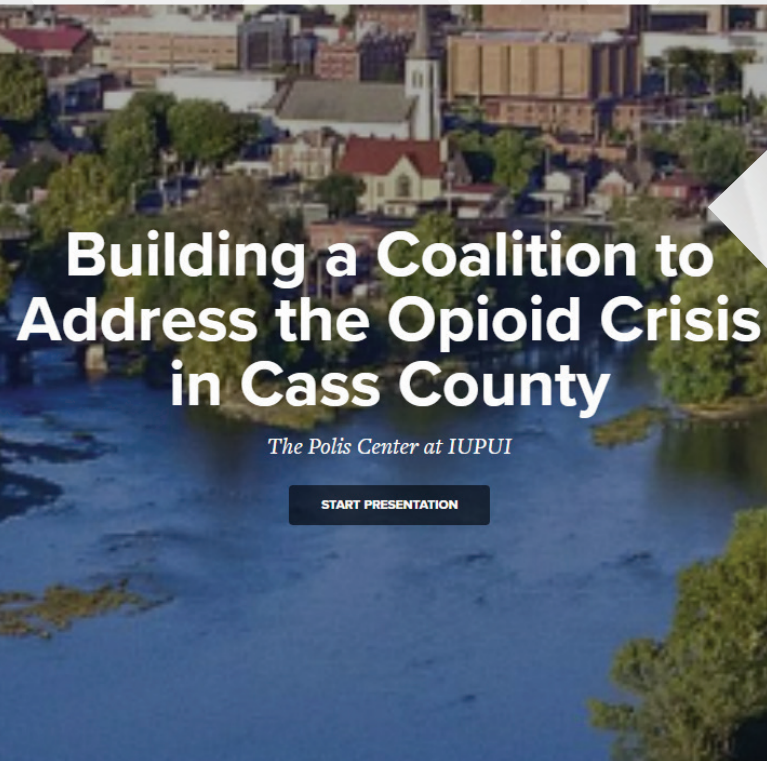
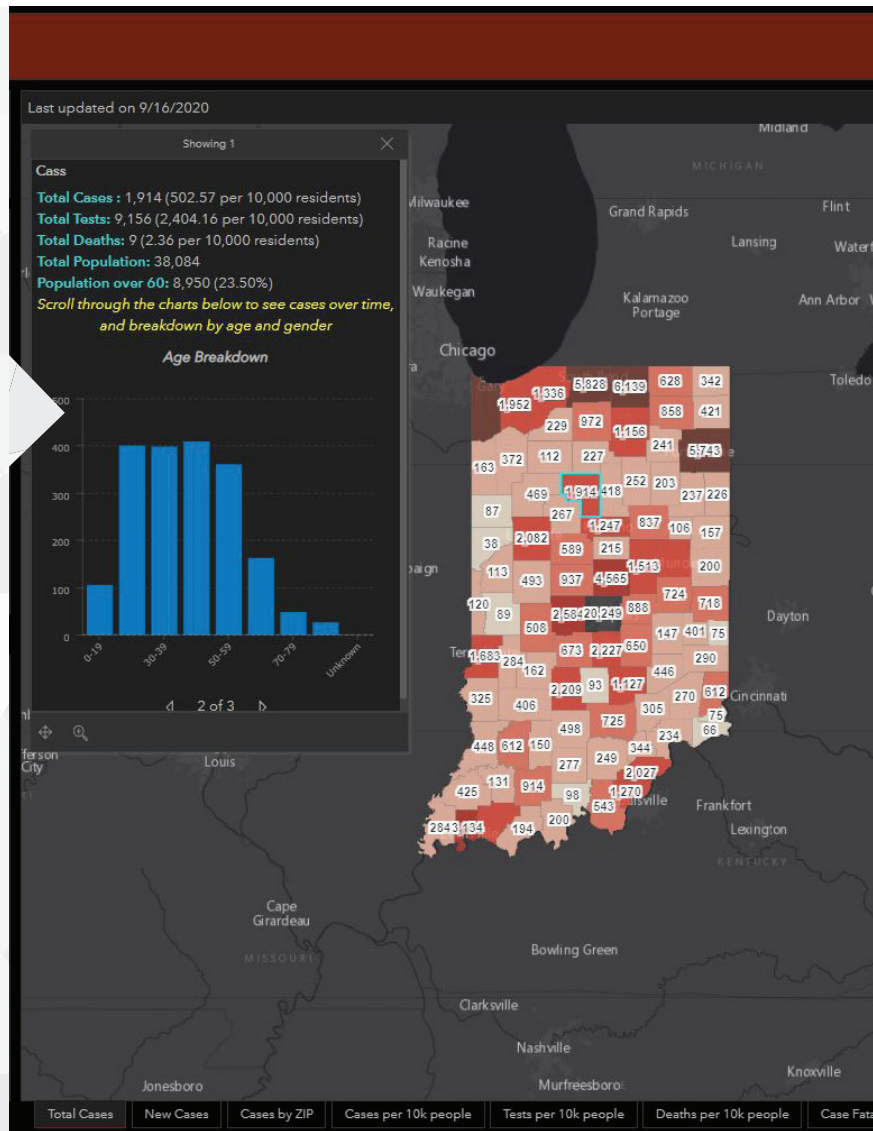
We also worked with Indiana, South Carolina, and the Georgia Department of Natural Resources on important mitigation projects and offered courses in disaster modeling and resilience to over 60 jurisdictions nationally.

In all of these ways, we sought to advance our mission to support research and analysis for better decision-making and to help improve policy and practice for the greater good of communities in Indiana and beyond.

NOTEWORTHY ACCOMPLISHMENTS

Coronavirus Data Hub

On March 24, 2020, the Polis Center launched the SAVI Coronavirus Data Hub to provide practitioners and policy-makers access to new data and actionable information related to this pandemic. This platform includes maps, dashboards, and articles highlighting disparities and inequities for hard-hit neighborhoods, at-risk neighborhoods, and highly impacted populations such as older adults and people of color. The hub received nearly 200,000 views in its first eight weeks and has been referenced often by local media. We support the use of the data and helped WFYI Public Media in its coverage of how lack of Internet access affects e-learning opportunities for children. (<http://www.savi.org/coronavirus-data-hub/>) The Indiana Geographic Information Council (IGIC) awarded the Special Achievement in GIS for the hub demonstrating the power of using teamwork, collaboration, and GIS to address pressing community challenges.



Building a Coalition to Address the Opioid Crisis in Cass County

The Polis Center at IUPUI

START PRESENTATION

Indiana Data Partnership

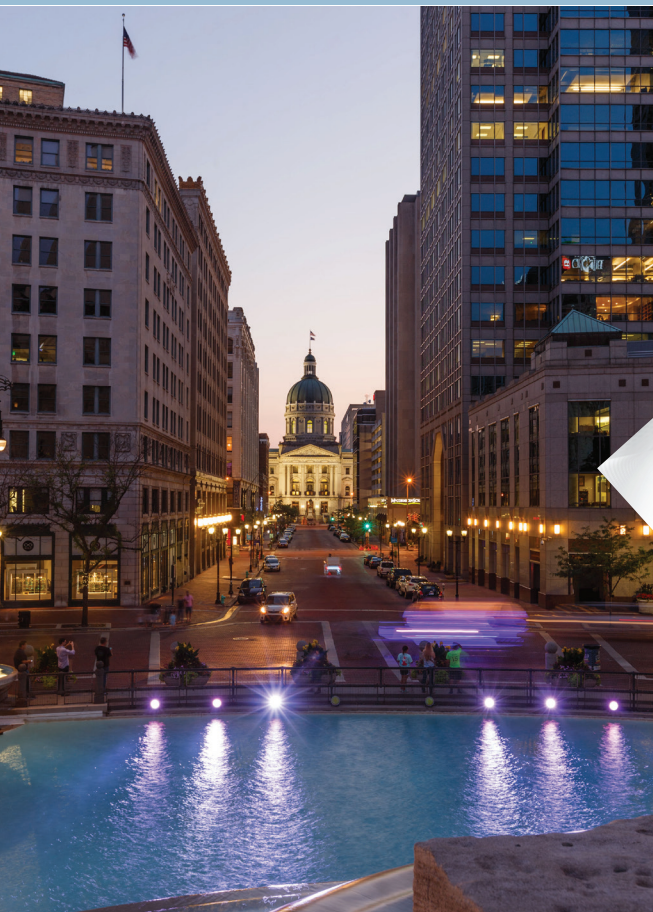
The Indiana Data Partnership (IDP), funded by Lilly Endowment, Inc., links the State of Indiana's Management Performance Hub (MPH) and Indiana University (IU) to develop an integrated, scalable, and collaborative decision-support framework designed to increase the availability and utility of data shared among state agencies, local governments, and non-profit organizations that serve vital public needs. IU Partners include the Polis Center, the IU Public Policy Institute (PPI), the Indiana Business Research Center (IBRC), and the IU Network Sciences Institute. The Polis Center efforts during this first phase included visualizing the network of organizations involved in addressing the opioid crises. <https://www.in.gov/idp/>



TECHPOINT MIRA AWARDS BEST OF TECH NOMINEE 2020

TechPoint Mira Award

The Mira Awards, which is Indiana's largest and longest-running technology awards program, recognizes the "Best of Tech" in Indiana. The SAVI community information system was nominated this year for the Community Impact category. SAVI is a key resource for building the capacity of others to use data for community good. Polis is a powerful innovator in the field of community indicators, particularly in our use of geospatial technologies. This is fundamental to savi.org because of its ability to integrate and visualize information by location. Organizations make better decisions about services and programs and target resources where most needed, helping our most vulnerable populations in Central Indiana. Our analysts, skilled in statistics, spatial analysis, data visualization, and information design, develop cutting edge research that directly impacts organizations working on our region's most pressing issues. By making this research easy to read and understand, we have equipped hundreds of organizations with new knowledge to guide their work. From our community-based research to our work with community organizations, we understand that systemic inequity drives many of the needs and hardships experienced in Indianapolis, and inclusive opportunity is a pathway to addressing those hardships.



Digital Encyclopedia of Indianapolis

Assisted by the city's major heritage and cultural organizations, and in partnership with Indianapolis Public Library, we are developing an innovative, digital *Encyclopedia of Indianapolis* as a bicentennial legacy project. It will take full advantage of web and social media technologies to update and add significant new material to this essential resource on the city. The interactive website will launch in early 2021 and will be free and available in mobile as well as desktop versions. Upon completion, it will become part of Indianapolis Public Library, which will ensure its continuous updating as an ever-fresh resource for citizens or anyone with a need to know about the city, past and present. Guided by a Civic Advisory Committee and a steering committee, this platform aims to become an essential and comprehensive guide to all things Indianapolis.

State of Aging in Central Indiana Report

For the Central Indiana Senior Fund of the Central Indiana Community Foundation, our community health informatics team completed a comprehensive assessment of the needs of older adults in Central Indiana, including healthcare, health outcomes, caregiving, social well-being, aging in place, food security, safety, housing, transportation, and financial security. We published findings in the first version of the *State of Aging in Central Indiana Report (SoAR)*, completed in February. The report provides funders, policymakers, and decision-makers access to actionable community intelligence about the social, economic, and equity issues associated with aging. In March, we began the design of the interactive, online version of the report, which will allow users to access more detailed data about the issues that interest them.



FEMA Cooperating Technical Partner

The Polis Center is a Cooperating Technical Partner with the Federal Emergency Management Agency (FEMA) and works closely with the Indiana Department of Natural Resources to update Indiana's flood risk maps and data. It collaborates with the Indiana Department of Homeland Security on improving state and county hazard mitigation plans. The Polis Center received a 2019 Cooperating Technical Partner (CTP) award for \$550,000 from FEMA. It is supporting the Indiana Department of Natural Resources (IDNR) effort to update flood maps for Indiana counties in the Lower East Fork White River watershed. This award, and one we received in 2018, are earmarked to help IDNR update countywide flood maps in the Upper Wabash, Lower Wabash, Middle Wabash-Busseron, Sugar Creek, and Lower East Fork White River watersheds. These projects continue through Sept. 2022.





COMMUNITY INFORMATICS

Our focus: *We create community intelligence to support the decision-making process with and for nonprofits, community-based organizations, and government. We build solutions grounded in data, research, and community process. Our work includes building community information systems and decision-support tools; transforming data to extend its utility; developing and analyzing community data to understand social issues and how they affect communities; bringing academic research to practical applications; fostering data literacy; and building capacity in others to use information for decision-making.*

Key Accomplishments

We collaborate to address important community issues such as domestic violence, access to basic needs, opioid use, family financial stability, access to quality education, equal access to transportation, gentrification, and more. This past year, our key partnerships included United Way of Central Indiana (UWCI), United Way Fox Cities (WI), Hear Indiana, Enroll Indy, Indianapolis City-County Council, Domestic Violence Network, Indiana's Management Performance Hub (MPH), Indianapolis Neighborhood Housing Partnership (INHP), IU Public Policy Institute (PPI), IU Business Research Center (IBRC), and IU Lilly School of Philanthropy.

We partnered with United Way of Central Indiana to build capacity in the nonprofit community
We to continue to update and maintain one of the nation's largest community information systems. In partnership with United Way of Central Indiana, SAVI is moving into its 26th year serving nonprofit and community based organizations in Central Indiana by providing reliable data about communities; creating actionable information; developing tools for data analysis; and building capacity of nonprofit and community-based organizations to use data effectively. Through SAVI, we increased data literacy and built capacity to use data. This year we:

- Trained more than 300 representatives from over 95 nonprofit organizations and

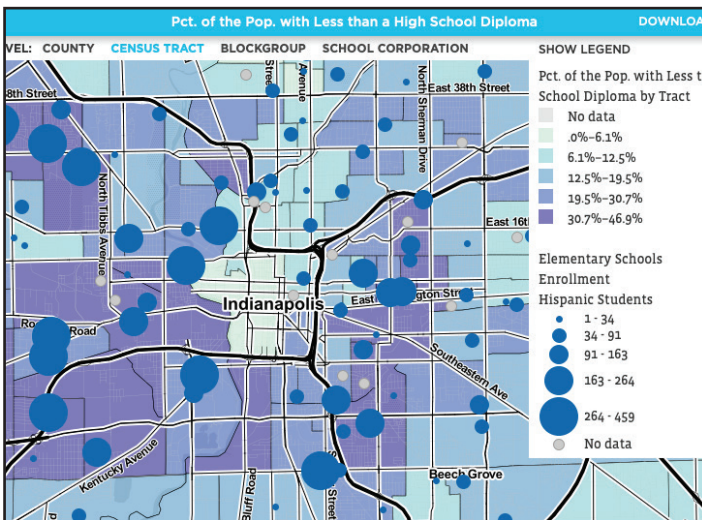
supported nearly 85 individuals in their use of community data.

- Continued to provide a 20-hour data literacy-training curriculum, including nine hands-on modules that teach participants basic skills to find, analyze, and interpret data to make informed decisions. Participants can earn continuing education units.
- Published actionable information, such as a report on food deserts and articles about housing, bicycle access, neighborhood histories, and coronavirus. We also published several case studies featuring area organizations that have used SAVI for strategic planning, grant writing, and other purposes.
- Convened 85 people for our SAVI Talks event in partnership with WFYI Public Media, bringing together multiple sectors to discuss important community issues using data as the starting point for conversation.
- In partnership with WFYI Public Media and the Indianapolis Public Library, we convened 95 people at our first two Data & Drafts, quarterly after-hour events aimed at sparking data-informed community conversations around topics affecting the Central Indiana region. A grant from the University of Pittsburgh's Institute of Museum and Library Services Civic Switchboard effort funds these events.
- At the invitation of Lilly Endowment, we hosted four custom half-day SAVI workshops to support Lilly Endowment's Enhancing Opportunity in Indianapolis initiative. We trained more than 120 people about poverty, financial stability, framing questions, and how to use SAVI as a resource to find related information.

We built an integrated community asset system to improve access to data about health and human services

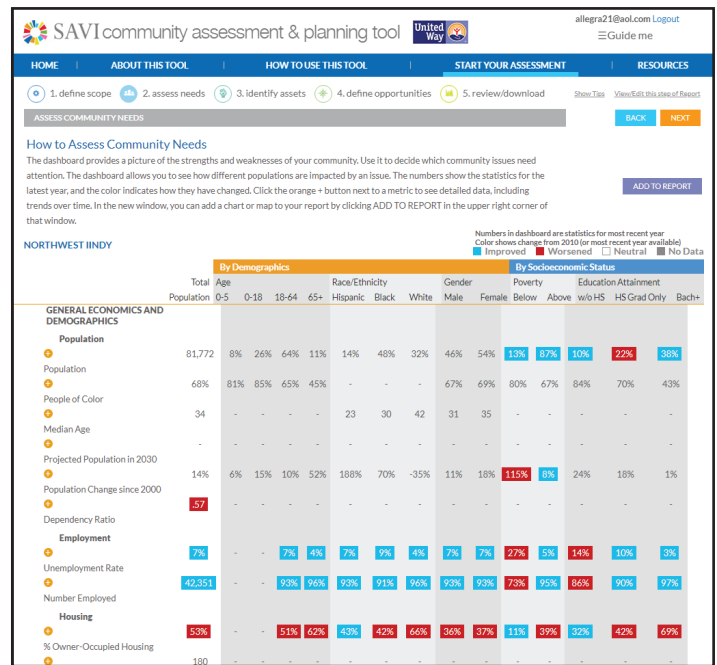
- We re-engineered the SAVI asset system to take advantage of newer technology, allowing for the management and analysis of enhanced data about community assets – a rich inventory of nonprofit services and programs that address health and human

service needs in Central Indiana. We developed a robust, secure data environment that is sustainable, scalable, and adaptable to many data types and structures. This more flexible data environment improves deduplication, classification, and integration of these data from multiple data sources and allows for advanced search and discovery. This allows us to incorporate details about organizations such as services offered, capacity, quality, performance, eligibility, and hours of operation.



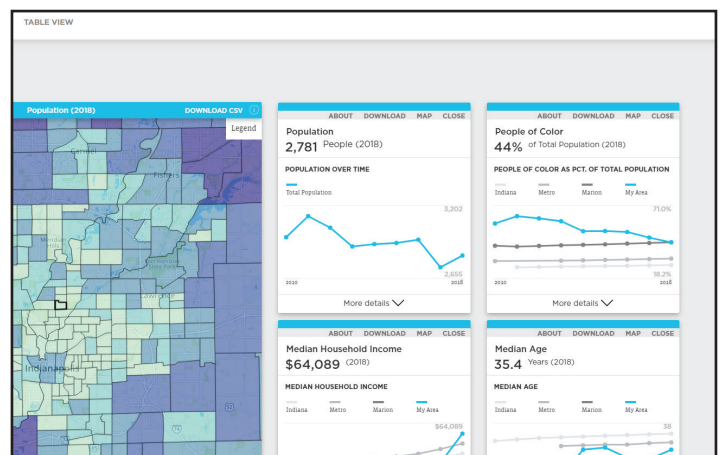
Improved community asset system provides enhanced data such as percentage of population with less than a high school diploma.

- As a result, organizations can better assess existing services against the needs of an area's residents. The richer data supports community assessments, program-planning efforts of agencies, gap analysis, resource allocation, and service delivery.
- This redesign allowed us to launch new features and visualizations in SAVI's online tools:
 - » **Community Assessment & Planning Tool:** Created in collaboration with United Way of Central Indiana, this tool allows nonprofits to define a custom geographic boundary and access a wealth of data describing the health, basic needs, income, and education needs of its residents and the existing resources to support those needs. <http://assessment.savi.org/>



SAVI Community Assessment & Planning Tool

» **SAVI Community Profiles.** Community Profiles is a mobile-friendly tool that provides quick access to demographic, socio-economic, and asset data for customizable geographic areas. It creates custom, interactive dashboards that shows data about the population, assets, and resources in the chosen area. Users can save dashboards, share them on social media, and embed them in other websites. Users can also view the data in summary tables and download. <http://profiles.savi.org>

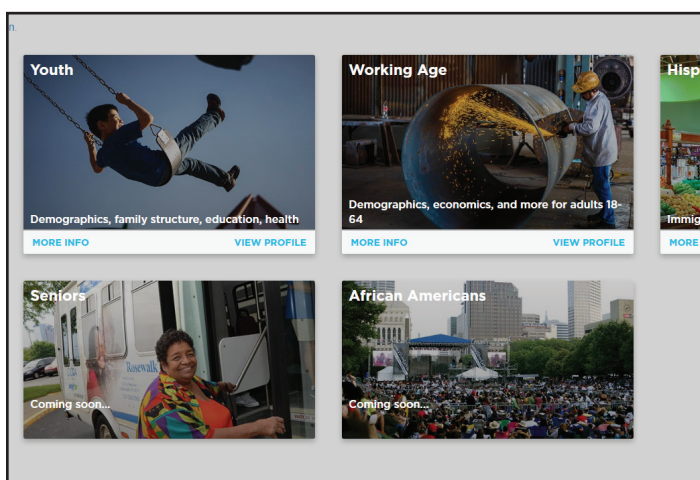


SAVI Community Profiles Tool

» **SAVI Topic Profiles.** In this tool, a user chooses a topic such as health, equity, education, or economy and a geography, then can access a dashboard of data trends and comparisons relevant to that topic. We continue to incorporate new data sources for these topics. <http://profiles.savi.org/topics>

» **SAVI Population Profiles.** This tool gives users access to data specific to particular demographic groups in one click. The site featured four populations at launch: Hispanics and Latinos, Working Age, Youth, and Working Poor. <http://profiles.savi.org/populations>

- We collaborate with Hear Indiana and the Indiana Management and Performance Hub to help decision-makers gain access to data about education services and opportunities for deaf and hard-of-hearing children. We are mining data from state sources to quantify the number of deaf and hard-of-hearing children. We will integrate data about these students from several sources to learn about this population and their education outcomes. The outcome will be a report aimed for legislators and Hear Indiana stakeholders.
- We partner with the Indianapolis City-County Council to develop actionable data to inform its public safety grant allocation process and to inform its committee on race and equity about the inequities Black Indy residents face in the current pandemic that contribute to increased positivity rates of COVID-19 for this population.
- We collaborated with United Way Fox Cities to update its Leading Indicators for Excellence (LIFE) Study, which provides a data-focused overview of the quality of life in the Fox Cities area of Wisconsin and offers priorities for community action. <http://www.foxcitieslifestudy.org/>

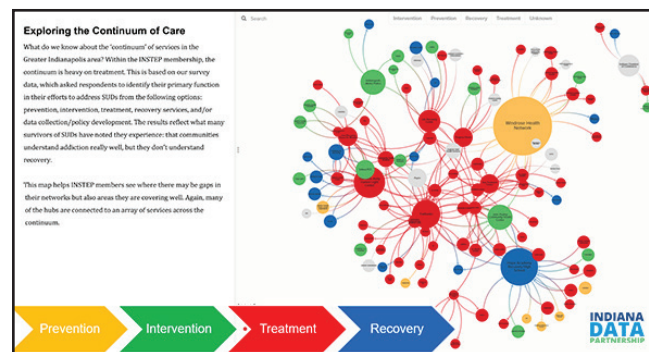


SAVI Population Profiles Tool

- This work earned Polis an official nominee recognition in the Community Impact category of The Mira Awards, the state's largest and longest-running technology excellence and innovation recognition program by TechPoint.

Through the Indiana Data Partnership (IDP), we expanded data and grew capacity to address important community issues, including the opioid use epidemic

- In addition to IDP references above, Polis added the power of its SAVI community information system to the state's data resources along with other partners such as the IBRC.



Visualization of the Continuum of Care

We built new partnerships to support policymaking in Central Indiana and beyond

- We collaborated with Enroll Indy, The Mind Trust, the City of Indianapolis, and Indianapolis Public Schools on a research project analyzing school choice and demand in Marion County. We launched a new online tool called School Insights for Enroll Indy designed to help policymakers better understand school trends across Indianapolis. The Polis Center built the website for the Enroll Indy board of directors through a grant from The Mind Trust.

- This year, we completed the initial two-year phase of work with Polis efforts, which concentrated on visualizing the network of organizations involved in addressing the opioid crises.

- » Conducted over 170 interviews and gathered survey responses from participating organizations, parsed dozens of administrative datasets, and mined state-level organization data and IRS Form 990 data.

- » Expanded the pilot from Marion County to include Howard, Allen, Cass (<https://www.in.gov/idp/2451.htm>), Fayette (<https://www.in.gov/idp/2459.htm>), St. Joseph (<https://www.in.gov/idp/2463.htm>), Marshall, and Montgomery Counties. We engaged with organizations and leadership of opioid-related collaborations to create network maps visualizing the landscape of service providers and actors involved in providing treatment, education, funding, advocacy, and policy around this issue. <https://www.in.gov/idp/>

- » Supported organizations in their use of the data for strategic planning, grant writing, program creation, communication strategies, and identification of resources to address the opioid crisis.

We continued to expand our research and analysis of important community issues

- We received a grant from the Glick Family Foundation to amplify the SAVI Changing Landscape of Poverty research in 2020. The purpose is to increase awareness of poverty, inform community conversations, and inspire actions toward community improvement by providing actionable data and research about the changing landscape of poverty in Indianapolis. We are exploring topics such as disparities, access to resources, impacts, and other related factors to provide a deeper understanding of the issues surrounding poverty in neighborhoods most impacted. We also are helping organizations and community



leaders translate that information into action through community conversations and hands-on capacity building workshops.

- Published several new reports and articles:
 - » *Socioeconomic factors explain why some New York ZIP codes were hit hardest by COVID-19.* Jeramy Townsley, Karen Comer, Sharon Kandris, and Matt Nowlin. June 24, 2020. <https://www.savi.org/2020/06/24/socioeconomic-factors-explain-why-some-new-york-zip-codes-were-hit-hardest-by-covid-19/>
 - » *The Inequalities behind COVID-19 Disparities for African Americans in Indianapolis.* Matt Nowlin, Jeramy Townsley, Jay Colbert, and Sharon Kandris. May 15, 2020. <https://www.savi.org/2020/05/15/the-inequalities-behind-covid-19-disparities-for-african-americans-in-indianapolis/>
 - » *Three Ways to Visualize COVID-19 Race and Gender Disparities.* Jay Colbert. April 29, 2020. <https://www.savi.org/2020/04/29/three-ways-to-visualize-covid-19-race-and-gender-disparities/>
 - » *How long does it take to get to a grocery in each neighborhood?* Matt Nowlin and Ross Tepe. Jan. 31, 2020. <https://www.savi.org/2020/01/15/how-long-does-it-take-to-get-to-a-grocery-in-each-neighborhood/>
 - » *Getting Groceries: Food Access across Groups, Neighborhoods, and Time.* Unai Miguel Andres, Matt Nowlin, and Ross Tepe. Nov. 21, 2019. https://www.savi.org/feature_report/getting-groceries-food-access-across-groups-neighborhoods-and-time/
 - » *After Expansion, Pacers Bikeshare Offers Access to 34 Miles of Bike Trails.* Ross Tepe. Oct. 9, 2019. <https://www.savi.org/2019/10/09/after-expansion-pacers-bikershare-offers-access-to-34-miles-of-bike-trails/>
 - » *Michigan Street a Century Ago: A Neighborhood Node.* Matt Nowlin. Sept. 30, 2019. <https://www.savi.org/2019/09/30/michigan-street-a-century-ago-a-neighborhood-node/>
 - » *Candidate's Housing Proposal Calls Attention to How We Measure Vacancy*

Rates. Matt Nowlin. Aug. 1, 2019. <https://www.savi.org/2019/08/01/candidates-housing-proposal-calls-attention-to-how-we-measure-vacancy-rates/>

We partnered with IU Public Policy Institute (PPI) to support community evaluation efforts

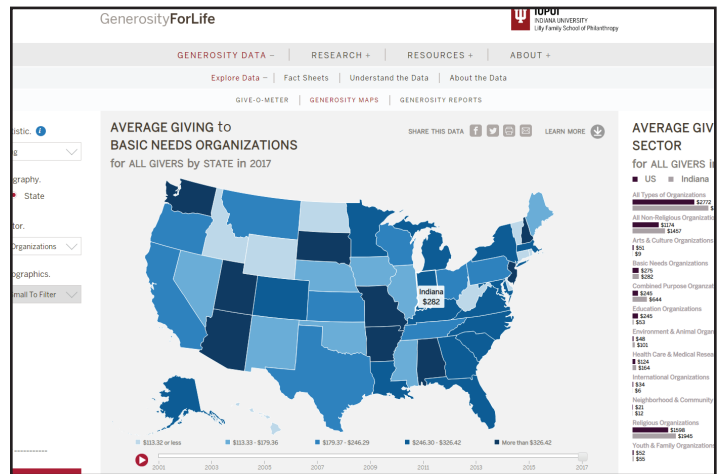
- We continue our work with the Indianapolis Neighborhood Housing Partnership (INHP) in partnership with the IU Public Policy Institute to conduct an impact study of INHP's transformational grant. In September 2019, we finalized a baseline report measuring the social, health, and economic impact of INHP's investments in Indianapolis communities.
- Great Families 2020 is a major Social Innovation Fund grant from the U.S. Corporation for National and Community Service awarded to United Way of Central Indiana. This program targets four high-risk neighborhoods in Indianapolis to address key factors that impact family stability. The IU Public Policy Institute and Polis are collaborating to evaluate this innovative service model that will be expanded to other programs that United Way funds. Most recently, Polis reported on client outcomes relating to program participation and built program and organizational capacity in grant recipients around using data and evaluation results to inform programmatic decision-making, resource planning and development, and communication with organizational stakeholders.

We continued updating and maintaining online dashboards to support stakeholder engagement, decision making, and policy analysis with multiple partners

- **An online Community Engagement Map, leveraging SAVI.** In partnership with IUPUI Office of Community Engagement (OCE), we continued to linked data from SAVI and IUPUI's Collaboratory to update an online searchable map that depicts the location of select IUPUI engagement activities in the surrounding communities as well as socio-

economic conditions, demographics and community assets. The map and narrated data stories engage stakeholders for more strategic multi-disciplinary collaboration to address pressing community issues with the goal of improving quality of life for central Indiana residents. <https://engage.iupui.edu/partner/Engagement-map/index.html>

- **A dashboard about the state of domestic violence in Marion County, Indiana.** In partnership Domestic Violence Network (DVN), we integrated and analyzed data from several sources in the criminal justice system with data from SAVI to understand domestic violence victims and perpetrators in Marion County. An online dashboard summarizes trends through charts and maps, making the data easy to use for media, advocates, and policymakers. A grant from the U.S. Dept. of Justice will allow DVN and Polis to continue this work for the next three years. <https://indydvdata.org/>
- **An online data visualization tools about US philanthropic giving patterns.**



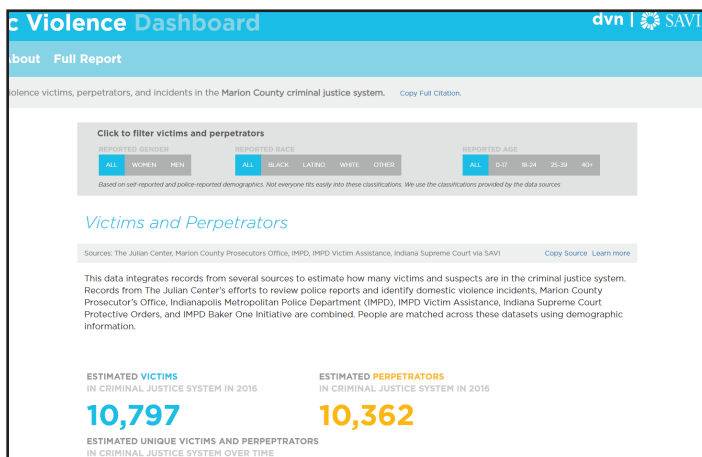
Generosity for Life Giving Map

IndyVitals provides quick access to SAVI's neighborhood-level data through a dashboard for tracking neighborhood progress on several neighborhood health and sustainability indicators. <http://indyvitals.org>

- **IndianImpact.** This dashboard provides access to a community dashboard for each county in Indiana that describes the health, education, income, and basic needs of residents. <http://IndianalImpact.org>

Presentations

- “Partnering to Solve Community Challenges: Addressing the Opioid Crisis.” Sharon Kandris and Naomi Penny. INSTEP Semi-annual meeting, Indianapolis, IN. Sept. 4, 2019.
- “Building Better Strategies to Address the Opioid Crisis through Network Mapping.” Sharon Kandris. Indiana Data Partnership Summit, Indianapolis, IN. Sept. 10 and Sept. 23, 2019.
- “Understanding the Hispanic/Latino Population Using SAVI Population Profiles.” Unai Miguel Andres. Indiana Latino Expo Education Committee. Oct. 8, 2019.
- “Integrated Public Data Systems: Improving Measures of Domestic Violence in Indianapolis.” Sharon Kandris. [Keynote panel presentation] National Community Indicators Consortium Conference. Denver, CO. Oct. 10, 2019.
- “Neighborhood Change in Indianapolis.” Unai Miguel Andres. [Panelist] Indianapolis Neighborhood Resource Center - Maintaining Identity in a Changing Neighborhood,



Domestic Violence Network Dashboard

In partnership with the IU Lilly School of Philanthropy, we continue to support a set of online data visualization tools to disseminate information about philanthropic giving patterns across the U.S. Tools include a Give-o-meter, Generosity Maps, and Generosity Reports. <http://generosityforlife.org/generosity-data/data-tools/>.

- **IndyVitals.** Created in collaboration with Plan 2020 and the City of Indianapolis,



Indianapolis, IN. Oct. 10, 2019.

- “SAVI Talks: Getting Groceries: Food Access across Groups, Neighborhoods, and Time.” Unai Miguel Andres and Matt Nowlin. SAVI Talks Public Forum, Indianapolis, IN. Nov. 21, 2019.
- “Framing the Problem & Finding Existing Data on SAVI” Unai Miguel Andres. [Staff training] Indianapolis Central Library. Nov. 25, 2019.
- “Building Data Capacity to Enhance Opportunity in Indianapolis.” Matt Nowlin, Unai Miguel Andres, Sharon Kandris, Rebecca Nannery, and Jay Colbert. Workshops for Lilly Endowment Grant Program, Indianapolis, IN. Jan. - Feb. 2020.
- “Collaboration to Address the Opioid Crisis: Network Mapping through the Indiana Data Partnership.” Naomi Penney. INSTEP Semi-annual meeting, Indianapolis, IN. Feb. 6, 2020.
- “Food Landscape for College Age Individuals in Marion County” Unai Miguel Andres. Hunger in Education, WFYI, Indianapolis, IN. Feb. 13, 2020.
- “Assessing Communities with SAVI.” Jay Colbert. IUPUI School of Health and Human Sciences. Feb. 20, 2020.
- “Collaboration to Address the Opioid Crisis: Network Mapping through the Indiana

Data Partnership.” Naomi Penney. Howard County Mental Health Coalition. Feb. 21, 2020.

- “Collaboration to Address the Opioid Crisis: Network Mapping through the Indiana Data Partnership.” Naomi Penney. Montgomery County Opioid Coalition. Feb. 27, 2020.
- “INSTEP Opioid Collaboration: Network Mapping through the Indiana Data Partnership.” Naomi Penney. Mental Health America Indiana (MHA). Mar. 4, 2020.
- “Data for Community Good: Building Local Capacity to Improve Policy and Inform Action.” Sharon Kandris. Data to Action Speaker Series, IUPUI School of Informatics and Computing. Mar. 6, 2020.
- “The Inequalities behind COVID-19 Disparities for African Americans in Indianapolis.” Sharon Kandris and Matt Nowlin. Indianapolis City-County Council Government Alliance on Race and Equity, Indianapolis, IN. May 13, 2020.
- “The Inequalities behind COVID-19 Disparities for African Americans in Indianapolis.” Sharon Kandris and Matt Nowlin. IUPUI Chancellor’s Cabinet, Indianapolis, IN. May 26, 2020.

Associations

- American Association of Geographers, Member
- American Planning Association, Member; Environment, Natural Resources and Energy Division, Communications Chair
- Indiana United Ways, Asset Limited, Income Constrained, Employed (ALICE) Research Advisory Committee
- National Neighborhood Indicators Partnership (NNIP, Urban Institute, Washington, DC), Member
- Project Management Institute Central Indiana
- United Way of Central Indiana, Community Impact Committee, Member
- Women & Hi Tech
- Indy Women in Tech
- IUPUI Diversity Enrichment & Achievement Program (DEAP)
- IUPUI Black Faculty and Staff Council

Community Advisors

Our project diversity requires that we operate several advisory boards to achieve the best and most relevant advice for work. Below is a list of our advisors.

Advisory Committee for SAVI Population Profiles

Purbasha Dasgupta, Research & Evaluation Manager, United Way of Central Indiana
Jessica Fraser, Executive Director, Indiana Institute for Working Families
Charlie Geier, Impact, Data Solutions & Statewide Advocacy Vice President, Indiana Youth Institute
Jonathan Hague, Data Analyst, Central Indiana Council on Aging
Yeciana Tostado, Associate Director of Indy Achieves, EmployIndy

Advisory Committee on SAVI Poverty Research

Ryan Brady, Director of Stewardship & Philanthropic Advisor, Glick Philanthropies
Cheryl Crane, Assistant Professor, Franklin College
Sheila Dennis, Senior Lecturer, IUPUI
Emily Hardwick, Operations Director, Indiana

CTSI Monon Collaborative
Jeff Hasser, Administrator of Real Estate and Economic Development, Department of Metropolitan Development, City of Indianapolis
Michael Howe, Chief Executive Officer, CAFÉ
Branca Merrit, Founding Director, Center for Research on Inclusion and Social Policy, IU Public Policy Institute
Ian Nicolini, Vice President of Indianapolis Economic Development, Indy Chamber
Joe Paulus, Director of Programs and Evaluation, Fathers and Families Center
Maury Plambeck, Neighborhood Development Director, Indianapolis Neighborhood Resource Center
Lindsey Rabinowitch, Program Director, Faith in Action, Christian Theological Seminary
Jordan Rodriguez, Director of International and Latino Affairs, City of Indianapolis
Robin Turner, Associate Professor of Political Science, Butler University

Advisors on SAVI Food Access Report

Kate Howe, Managing Director, Indy Hunger Network
Julia Quattrini, Food Systems Specialist, Marion County Public Health Department
Shellye Suttles, Assistant Research Scientist, IU Sustainable Food System Science



COMMUNITY HEALTH INFORMATICS

Our focus: *We collaborate with the public health, healthcare, social service, government, and academic sectors to enhance the use of place-based information for improving health and resiliency in Indiana and beyond. We build local capacity to understand and address population health and its social and environmental determinants through community research and analysis, collaboration, and application of advanced information technologies. Our research supports and advances community health improvement planning, population health management, public health intervention, and patient-centered decision-support.*

Key Accomplishments

Key accomplishments during FY2020 include the development of the inaugural issue of the *State of Aging in Central Indiana Report*, completion of Community Health Needs Assessments (CHNAs) for eight hospitals and their parent healthcare system, requirement specification for the Chemical Surveillance System for the Synthetic Drug Crisis project, and support for COVID-19 pandemic planning and response.

We also continued development and maintenance of community research infrastructure, including the Bowen Health Workforce Information Portal, the Diabetes Impact Project Indianapolis (DIP-IN) Community Profiles, and the geocoding service for the Indiana Addictions Data Commons and the Indiana Network for Patient Care.

Our key partnerships involved the Central Indiana Senior Fund, the Regenstrief Institute, the IU School of Medicine, the IU Center for Aging Research, and CICOA Aging & In-Home Solutions. In addition, we worked closely with the University of Indianapolis Center for Aging & Community, the Richard M. Fairbanks School of Public Health, the IUPUI Center for Research on

Inclusion and Social Policy, the Indiana Poison Center, and the IUPUI Department of Chemistry & Chemical Biology. We also developed many new relationships through our participation in the Indiana Pandemic Information Consortium and several of its working groups.

In the new fiscal year (2021), we will actively pursue opportunities to collaborate with our new colleagues in the IU School of Informatics and Computing - IUPUI (SolC) and extend our community-focused work via informatics-enhanced solutions. This includes using advanced data visualization and data mining techniques for decision support and predictive modeling of health outcomes and risk factors. In addition, we aim to collaborate with SolC colleagues to generate and pursue new research ideas that leverage our data resources and spatial analysis expertise to advance understanding of the social determinants of health, well-being, and resiliency. We envision a joint, next generation community research infrastructure.

We expanded our Community Health Needs Assessment work

- **Community Health Needs Assessment for Northeast Indiana.** We worked with Parkview Health System and its seven member hospitals on a community health needs assessment (CHNA) for Northeast Indiana. In the fall/winter of 2019, we produced eight CHNA reports, one for each hospital and for the system as a whole. These reports were the basis of Parkview Health's 2020-2022 Community Health Improvement Plans.
- **IU Health Business Intelligence.** We initiated a partnership with IU Health's Business Intelligence team to advance IU Health's incorporation of social determinant of health data into their population health management and clinical decision support activities. This ongoing work involves identifying relevant community risk factors

for heart disease and for maternal and child health and identifying and developing associated indicators for use in IU Health's predictive modeling and to inform their community health needs assessment.

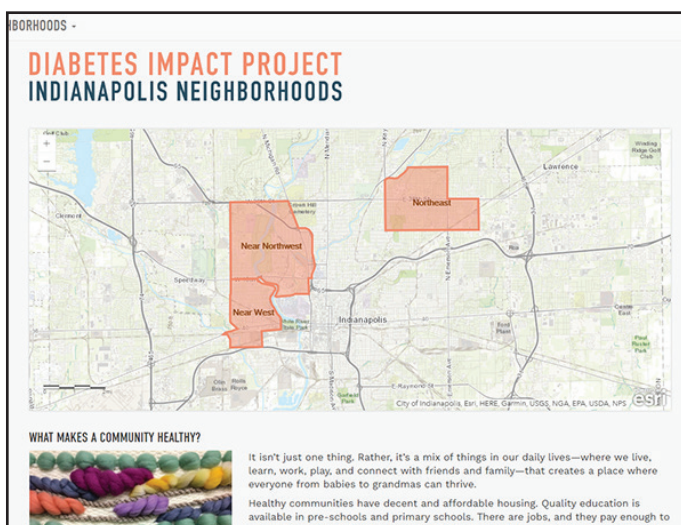
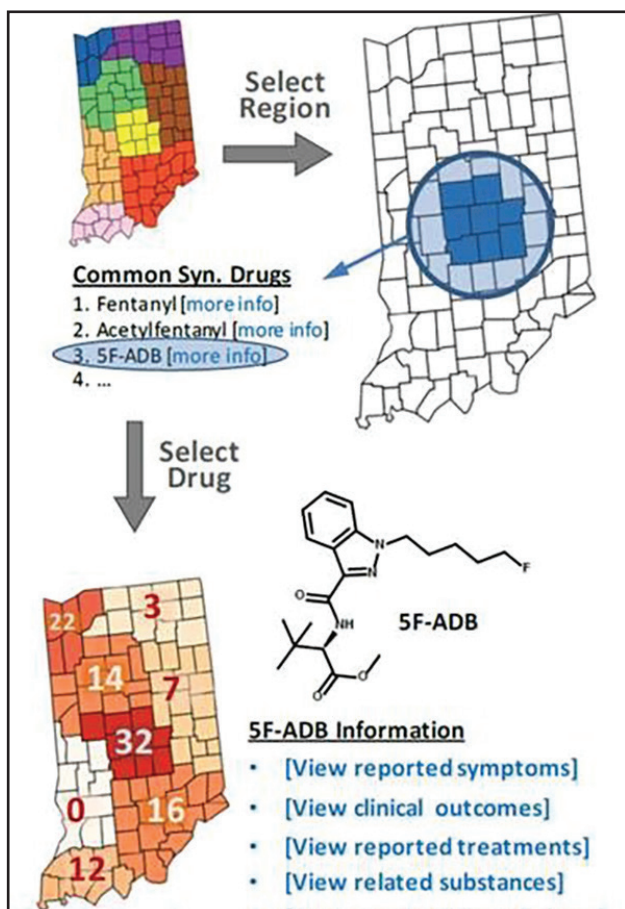
We informed healthcare and public health research and policy initiatives

- **Community Research Infrastructure.** We continued the development and maintenance of research infrastructure to support the examination of the determinants of health, including but not limited to:
 - » Online portal for the Chemical Surveillance System for the Synthetic Drug Crisis. We are collaborating with the IU School of Medicine Department of Emergency Medicine,

the IU School of Science Department of Chemistry, and the Indiana Poison Control Center, on a Phase 2 IU Grand Challenge Responding to the Addictions Crisis project, "Chemical Surveillance System for the Synthetic Drug Crisis." This initiative is developing a monitoring program to identify the drug compounds causing emergency department overdose visits.

- » Bowen Health Workforce Information Portal for the Bowen Center for Health Workforce Research and Policy
- » Geocoding service for the Indiana Addictions Data Commons and the Indiana Network for Patient Care

- **Diabetes Impact Project: Indianapolis Neighborhoods (DIP-IN).** As part of our collaboration with the Richard M. Fairbanks School of Public Health (FSPH) and the Marion County Public Health Department on the Diabetes Impact Project: Indianapolis (DIP-IN), we designed and implemented online, interactive community profiles for the project's three focus communities: Near West, Northwest, and Near East. The DIP-IN profiles provide information about the DIP-IN neighborhoods for researchers and community members to support the design of community-level interventions.



Conceptual depiction of the synthetic drug surveillance database showing the connections that can be made between drug compound, clinical information, demographics, and location. Graphic courtesy of Nicholas E Manicke, Associate Professor, Department of Chemistry and Chemical Biology, Forensic and Investigative Sciences Program, IUPUI.

Diabetes Impact Project Neighborhood Profile

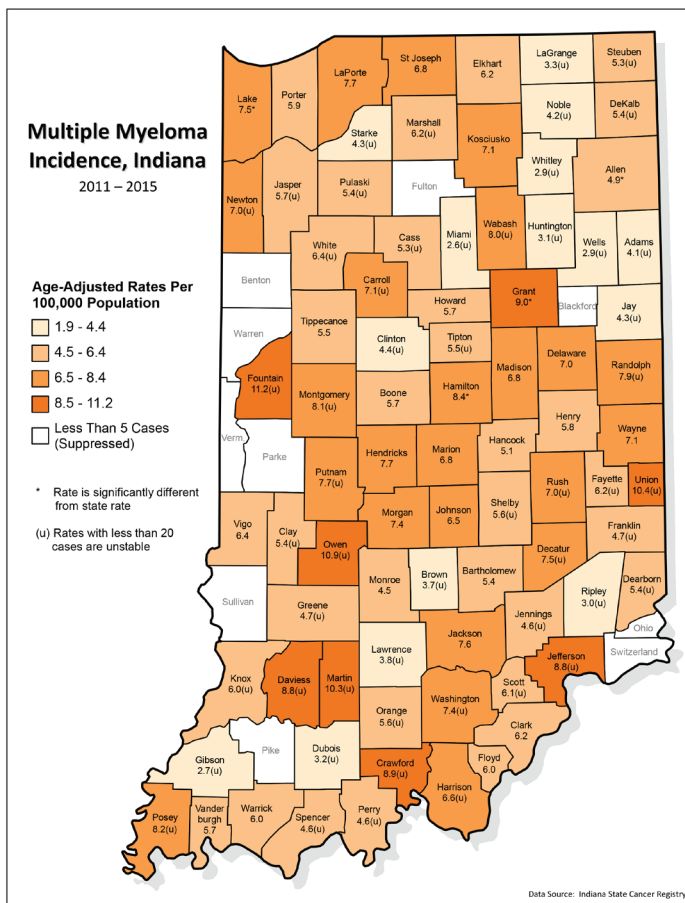
The use of spatial information technologies for this project was highlighted in the recent published book “Smarter Government: How to Govern for Results in the Information Age” (Martin O’Malley and Stephen Goldsmith, ESRI Press, Nov 5, 2019) <http://www.savi.org/apps/dipin/>

• **IU Precision Health Grand Challenge Initiative.** We are collaborating with researchers in the IU School of Medicine’s Division of Hematology and Oncology on the development and funding of an IU Precision Health research study to analyze the environmental and social risk factors for multiple myeloma in Indiana.

We supported several COVID-19 planning and response activities

• **Indiana Pandemic Information Consortium (IPIC).** We are participating in the Indiana Pandemic Information Consortium, which consists of leaders from the healthcare, public health, state, nonprofit, and academic sectors and meets twice weekly to coordinate information, analysis, support, and local response to the COVID-19 pandemic. We are also serving on both the Modeling and the Community IPIC Working Groups.

• **Tracking Asymptomatic COVID-19 through Indianapolis Communities (TACTIC).** We assisted IU School of Medicine researchers in the design of a recruitment strategy for the Tracking Asymptomatic COVID-19 through Indianapolis Communities study. This community-based study was one of the first of its kind in the U.S. to seek to understand the role of asymptomatic infection in children and adults in the spread of COVID-19. Our support enabled TACTIC researchers to recruit a demographically and geographically representative sample of the Marion County population.

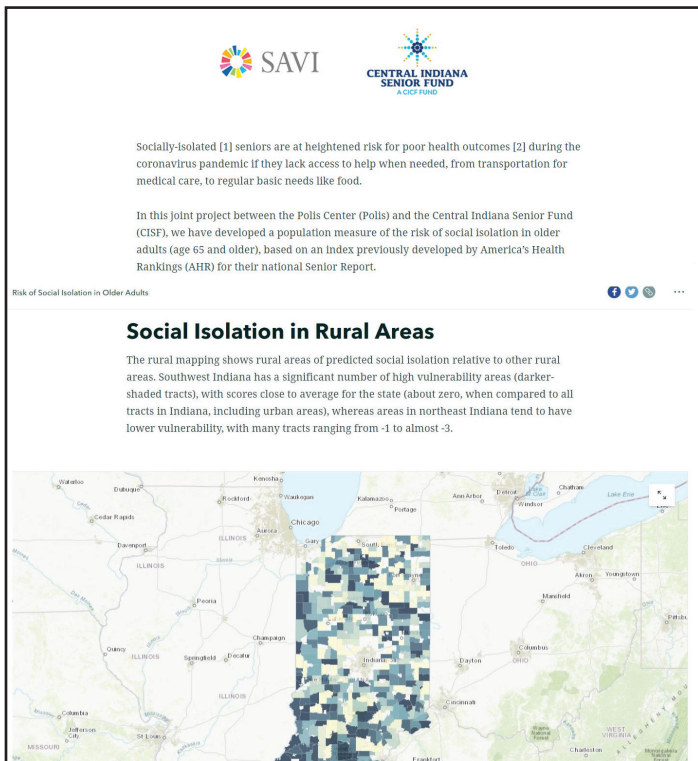


Multiple Myeloma Incidence in Indiana. Graphic courtesy of IU Precision Health Grand Challenge Initiative and Indiana State Cancer Registry.



TACTIC lab

- **Social Isolation Risk Index.** To assist our community partners in identifying where older adult communities are potentially vulnerable to social isolation, we created a Social Isolation Risk Index using local place-based information and implemented it on the SAVI COVID-19 Hub as an interactive user experience. The Central Indiana Community Foundation (CICF) disseminated this tool to senior serving organizations throughout Central Indiana to inform their COVID-19 response planning. We also conducted and published an analysis of the socioeconomic factors that influence COVID-19 risk.



Social Isolation Risk Isolation in Rural Areas

Associations

- American Public Health Association, Member
- Indiana Addictions Data Commons Advisory Committee, Member
- Indiana Pandemic Information Consortium, Member
- Modeling Working Group of the Indiana Pandemic Information Consortium, Member
- Community Working Group of the Indiana Pandemic Information Consortium, Member

Presentations

- “2019 Community Health Needs Assessment: Selecting Health Priorities,” Karen Comer and Valerie Yeager. Parkview Health System Corporate Center, Fort Wayne, Indiana. July 16, 2019.
- “State of Aging in Central Indiana: Preliminary Findings.” CISF Advisory Board, Indianapolis, Indiana. Sept. 26, 2019.
- “Introduction to the State of Aging in Central Indiana Report.” SoAR Advisory Committee, Dec. 4, 2019.
- “Findings from the State of Aging in Central Indiana Report.” SoAR Advisory Committee, Jan. 9, 2020.
- “State of Aging in Central Indiana: Preview of the First Edition Report.” CISF Advisory Board, Indianapolis, Indiana, Jan. 21, 2020.
- “Selected Topics and Proposed Sources for 2021 Report.” SoAR Advisory Committee, Indianapolis, Indiana, June 2, 2020.
- “Vision for 2021 SoAR.” Central Indiana Senior Fund (CISF), Advisory Board, Indianapolis, Indiana, June 4, 2020.

Reports

- *Socioeconomic factors explain why some New York ZIP codes were hit hardest by COVID-19.* Jeramy Townsley, Karen Comer, Sharon Kandris, and Matt Nowlin. SAVI Coronavirus Data Hub. June 24, 2020.
- *Risk of Social Isolation in Older Adults: Where are seniors that are more likely to experience social isolation?* Jeramy Townsley, Matt Nowlin, and Karen Comer. SAVI Coronavirus Data Hub. April 8, 2020.
- *State of Aging in Central Indiana Report (First Version),* Indianapolis, Indiana. Jan. 31, 2020.
- *2019 Community Health Needs Assessment, Parkview Health, Huntington County.* Dec. 6, 2019.
- *2019 Community Health Needs Assessment, Parkview Health, Kosciusko County.* Dec. 6, 2019.
- *2019 Community Health Needs Assessment, Parkview Health, Noble County.* Dec. 6, 2019.

- *2019 Community Health Needs Assessment, Parkview Health, Wabash County.* Dec. 6, 2019.
- *2019 Community Health Needs Assessment, Parkview Health, Whitley County.* Dec. 6, 2019.
- *2019 Community Health Needs Assessment, Parkview Health, Regional.* Oct. 22, 2019.
- *2019 Community Health Needs Assessment, Parkview Health, Allen County.* Oct. 10, 2019.
- *2019 Community Health Needs Assessment, Parkview Health, LaGrange County.* Oct. 4, 2019.

Community Advisors

Central Indiana Senior Fund (CISF) Advisory Board

Ken Bennett, Executive Director, Center for At-Risk Elders
 Andrew Class, M.D., St. Vincent Stress Center
 Keesha Dixon, Executive Director, Asante Children's Theatre
 Susan Guyett, Retired
 Heather Hershberger, Consultant/former Executive Director of Alzheimer's Association
 Kim Jacobs, Consultant
 James Leich, Retired
 Jane Malkoff, Clarity Care Advocates
 Ellen Miller, Executive Director, UIndy Center for Aging & Community
 Candace Preston, Veterans Health Administration
 Julie Koegel, Grants Officer, CISF
 Robin Elmerick, Director of Effective Philanthropy, CISF

State of Aging in Central Indiana Advisory Committee

Gerald Ardis, Flanner House
 Duane Etienne, Retired
 Pat Healey, Ascension Health
 Kathryn McEntire
 Ellen Miller, UIndy Center for Agency and Community
 Michelle Niemier, Center for At-Risk Seniors

Todd Wagoner, Community Health Network
 Carolyn Watts, Retired
 Ruth Williams, Edna Martin Christian Center
 Dustin Ziegler, CICOA Aging & In-Home Solutions Inc.
 Dan Clark, IU Center for Aging Research
 Steven Counsell, Family Social Service Administration

Indiana Pandemic Information Consortium

National Collaboration

Peter Embi, Regenstrief Institute
 Nir Menachemi, Richard M. Fairbanks School of Public Health

Biosciences Industry

Darshan Shah, BioCrossroads

Modeling

Patrick McGill, Community Health Network
 Brian Dixon, Richard M. Fairbanks School of Public Health

Dashboarding

Shaun Grannis, Regenstrief Institute
 Tim Tarnowski, IU Health

Universities

Kosali Simon, IU Bloomington School of Public Health
 Paul Griffin, Purdue

Community

Sarah Wiehe, IU School of Medicine
 Jackie Dowd, Lilly Endowment

State

Connor Norwood, Family Social Service Administration
 Pamela Pontones, Indiana State Department of Health
 Joshua Martin, Indiana Management Performance Hub,

Data Standards and Exchange

John Kansky, Indiana Health Information Exchange
 John Roach, KSM Consulting



Hospitals and Healthcare Systems

Andrew VanZee, Indiana Hospital Association
Matt Browning, Indiana Hospital Association
Tory Castor, IU Health
Rebecca Adkins, Ascension Health
David Kim, Franciscan Alliance
Jeff Wells, OurHealth
Craig Wilson, Suburban Health Organization
Tammy Toscos, Mirro Center for Research and
Innovation, Parkview Health

**Indiana Addictions Data Commons (IADC)
Governance Committee**

Kaitlyn Boller, Indiana Hospital Association
Charlie Clarke, HC1.com
Karen Comer, The Polis Center
Stanley Crosley, Crosley Law Offices
Brian Dixon, Regenstrief Institute
Peter Embi, Regenstrief Institute
Joe Gibson, Marion County Public Health
Department

Shaun Grannis, Regenstrief Institute
Rachel Lane, Family and Social Services
Administration
Joshua Martin, Indiana Management
Performance Hub
Carl Dean McKinley, Regenstrief
Carol Rogers, Indiana Business Research Center
Kosali Simon, IU Bloomington School of Public
Health
Brian Tabor, Indiana Hospital Association
Nicolas Terry, IU School of Law
Joshua Vest, Richard M. Fairbanks School of
Public Health
Sarah Wiehe, IU School of Medicine



GEOINFORMATICS

Our focus: We perform an important function in assessing different types of vulnerabilities and needs for local, state, tribal and federal government, the private sector, and nonprofits. We reinforce community efforts to prevent or reduce losses from natural disasters by combining geospatial analysis, modeling, and outreach activities. Our disaster (or crisis) informatics initiatives support disaster preparedness, mitigation, response, and recovery activities. We design and develop open source as well as Esri technology-driven information systems through which to explore the interconnectedness of people, place, community, information, and technology. We also design and implement research to assess the physical, social and economic impacts of hazards.

Key Accomplishments

We worked with Indiana, South Carolina, and the Georgia Dept. of Natural Resources on several important mitigation projects and continued offering courses in disaster resilience. We look forward to a future with the School of Informatics and Computing (SolC). There is a natural synergy between the work of SolC and Geoinformatics. Big data, artificial intelligence, deep learning and machine learning, for example, are research and application area that are shared by both groups. Our capacity to serve the broad interests of our partners will greatly increase as we join forces with SolC, allowing us to add value to present and future partners of the Polis Center, and to the general Indiana Geographic Information System (GIS) community.

We supported community disaster efforts for several states

- We collaborated with the Indiana Dept. of Homeland Security (IDHS) and the Federal Emergency Management Agency (FEMA) Region 5 to create multi-hazard mitigation plans for the following counties: Martin, Blackford, Benton, Steuben, DeKalb, Tipton,

Carroll, Decatur, Gibson, Dubois, Huntington, Washington, and LaGrange.

- Polis completed a project in which we provided ongoing support of the South Carolina Division of Emergency Management Multihazard Mitigation Platform that we developed this past year.
- The National Oceanic and Atmospheric Administration (NOAA) awarded the Polis Center a grant through the Georgia Department of Natural Resources to develop an infographic. The infographic highlights key findings and recommendations from a recently completed Polis and University of Wisconsin study of 118 current and future wind and flood scenarios based on predicted climate change and the ability of green infrastructure to mitigate that change.

Geospatial and resiliency education

We develop and instruct quality hands-on disaster resiliency courses and workshops taught by highly knowledgeable and experienced instructors.

- We continue to be recognized as a leader in the development and delivery of practitioner courses and workshops that build competencies in the identification of natural hazards, the analysis of their potential economic and social impacts, and solutions in mitigating those impacts. In the past year, we delivered multiple workshops at the FEMA's Emergency Management Institute in Bethesda, Maryland as well as in the State of Florida for the Florida Division of Emergency Management.
- As a Risk MAP Cooperating Technical Partner with FEMA Region X, the Polis Center received funding to develop a series of four customized courses for pilot presentation in Region X (Alaska, Washington, Oregon, and Idaho) over the next two years. These courses will address earthquake, tsunami and flood hazards specific to this region, the geospatial tools and models appropriate for understanding and mitigating these hazards,

and the data that should be used to inform the models. The workshops will support collaboration between participants and others in the Region who are responsible for addressing these hazards.

- Polis received a NOAA grant through the Georgia Department of Natural Resources to develop and deliver two workshops and a webinar to explain the methodology design for this study and discuss how local stakeholders can use it in the future. The audience for these training programs includes technical experts, decision-makers, and members of the local communities where the study occurred.

Other notable achievements

- Kevin Mickey was named President-Elect of the Urban and Regional Information Systems Association (URISA). He began a three-year term in October 2019. Kevin will serve as President-Elect in his first year, President in year two, and Immediate Past President in his final year. URISA has a long and productive history as a leader in the geospatial profession. Since its beginning in 1966, it has supported geospatial professionals at all stages of their career with training and resources that enable them to be active and productive members of their organization and communities. It serves a critical role as a voice for its members in guiding decision makers on policies that impact how data and tools are developed, managed and applied in support of a wide range of community activities such as property management, land management, public safety, infrastructure management and more.
- Jim Sparks is a member of an advisory group assisting Megan Compton, Indiana Geographic Information Officer, with planning for the next statewide orthophotography project. The state intends to issue a Request for Proposal for updating the statewide orthophotography data set in the third quarter of 2020. The state had three previous statewide orthophotography projects in 2005-2006, 2011-2013, and 2016-2019.

- Jim Sparks passed the Indiana Geographic Information Council (IGIC) leadership torch as he transitioned from President of the Board to Past President. As Past President, he will remain part of the Executive Committee and continue to contribute to important work of this volunteer-based non-profit whose mission is to advance the practice of GIS in Indiana.
- In June 2020, Marianne Cardwell was elected to the Indiana Geographic Information Council as vice president.
- Kevin Mickey is participating in a focus group that is part of a joint (URISA) and National Public Safety Geographic Information System Foundation (NAPSG) study of social vulnerability, resilience, and risk indices and datasets available to the emergency management community. In recent years, the number of available indices that measure risk, vulnerability, and resilience has grown. This provides valuable insights into communities but also prompts confusion over when to use what index and for what purpose. This research will inform a future product to help guide users in selecting the appropriate indices to meet their needs.

Presentations

- “Defining the Role of GIS in Community Resilience.” Kevin Mickey. ESRI Users Conference, San Diego, CA. July 8-12, 2019.
- “All Hazards and Resiliency: Addressing Demographic Changes and Extreme Weather Conditions.” Matt Nowlin and Jim Sparks. 2nd Annual Indiana Homeland Security and Resiliency Conference, Indiana. Aug. 8, 2019.
- “Trends in geospatial technologies, their role in crisis management, and how they impact community resiliency.” Kevin Mickey. FEMA Executive Academy, Bethesda, MA. Aug. 21, 2019.
- “ArcGIS Pro Tips & Tricks.” Marianne Cardwell. State of Indiana GIS Day. Sept. 17, 2019.
- “How Indiana accomplished the voluntary contribution of critical GIS data sets from all 92 Indiana counties to create four new statewide data layers.” Jim Sparks co-

presented with Megan Compton, Indiana Geographic Information Officer. National States Geographic Information Council Annual Conference (NSGIC), Snowbird, UT. Sept. 23-27, 2019.

- Panel on best practices in using information technologies to ensure community resilience to crisis events. Kevin Mickey. URISA GIS-Pro Conference, New Orleans, LA. Sept. 29-Oct. 2, 2019.

Associations

- Indiana Geographic Information Council, Member and Jim Sparks, past president of Board of Directors and Marianne Cardwell, vice president.
- Indiana Math and Science Academy, Jim Sparks, Vice Chair of Board of Directors
- URISA, Kevin Mickey, President-Elect; Chair, Professional Education Committee; and Chair (through Sept. 2019) Community Resilience Task Force (through Sept. 2020)
- Indiana Geographic Information Council, Kevin Mickey, Board of Directors (Feb. 2018 through Feb. 2020.)
- National Institute of Building Sciences Multihazard Mitigation Council, Kevin Mickey, Immediate Past President.
- Association of State Floodplain Managers, Member
- Indiana Association for Floodplain and Stormwater Management, Member
- National States Geographic Information Council, Member
- Indiana Silver Jackets, member (a federal state coordinating body). Through this group, we coordinate and facilitate activities related to mitigation of flooding in Indiana. Member organizations in addition to Polis include: Indiana Department of Homeland Security; Indiana Department of Natural Resources; Indiana Department of Transportation; Indiana Geographic Information Office; Indiana Finance Authority; Indiana Office of Community and Rural Affairs; U.S. Army Corps of Engineers Louisville; U.S. Geological Survey; National Weather Service; Center

for Earth and Environmental Science; IUPUI; Indiana Geological and Waters Survey; Association of State Floodplain Managers; and Christopher B. Burke Engineering, LLC



SPATIAL HUMANITIES

Our focus: *Spatial Humanities relies upon powerful geospatial technologies and methods to explore new questions about the relationship of space to human behavior and social, economic, political, and cultural development. We serve an international community of humanities scholars interested in applying geospatial technologies to the disciplines within the humanities to explore new questions in this field. We have collaborated with researchers around the world to explore spatial narratives, advanced visualization, dynamic context, and immersive environments.*

Key Accomplishments

- We continued work with United Kingdom (UK) partners at Lancaster University, University of Leeds, and University of Bristol and U.S. partners at Florida State University, West Virginia University, and Stanford University on issues ranging from Qualitative and Temporal Spatial Representation to deep mapping.
- We also maintained an ongoing relationship with Academia Sinica, Taiwan's premier research institute, on the role spatial technologies can play in helping researchers to understand humanities problems.
- We gave keynote and plenary talks to symposia in Los Angeles and Tours, France (via Zoom), published two volumes in the field-leading Series on Spatial Humanities (Indiana University Press, with the series to move to global publisher Routledge in 2020), and edited a major journal in the field, IJHAC: A Journal of Digital Humanities (Edinburgh University Press).

Presentations

- David Bodenhamer, "Beyond GIS: The Promise of Spatial Humanities." Fall Colloquium of the Spatial Sciences Institute at University of Southern California. Oct. 15, 2019.
- David Bodenhamer, "From Historical GIS

to Deep Mapping: Toward a Robust Spatial Humanities." University of Tours, May 11, 2020

- David Bodenhamer served as an international referee for major grant awards for an EU-Polish research program, Mar. 2020.

Associations

- Virtual Center for Spatial Humanities (VCSH). A collaboration among IUPUI (Polis Center), Florida State University, and West Virginia University to set an agenda and develop projects and technology for spatial humanities.
- IU Press Series on Spatial Humanities. David Bodenhamer, series general editor.
- IJHAC: A Journal of the Digital Humanities (Edinburgh University Press), David Bodenhamer, co-editor.

Community Advisors

Advisory Board Members Virtual Center for Spatial Humanities

- John Corrigan, Lucius Moody Bristol Distinguished Professor of Religion and Professor of History, Department of Religion, Florida State University
- Trevor Harris, Professor of Geography, Department of Geology and Geography, West Virginia University
- David Bodenhamer, Executive Director, Polis Center at IUPUI
- Ed Ayers, Tucker-Boatwright Professor in the Humanities, Department of History and President Emeritus, University of Richmond
- Peter Bol, Vice Provost for Advances in Learning and Charles H. Carswell Professor of East Asian Languages and Civilizations, Office of the Provost, Harvard University
- Peter Doorn, Director, Dutch Archives and Networking Service (DANS), Netherlands
- I-chun Fan, Research Fellow, Institute of History and Philology and Executive Director, Center for Geographic Information Science, Academia Sinica, Taiwan
- Michael Goodchild, Emeritus Professor of Geography, University of California

-Santa Barbara Yuzuru Isoda, Associate Professor, College of Asia Pacific Studies, Ritsumeikan Asia Pacific University, Japan
Kim Knott, Professor of Religious Studies, University of Leeds, UK
Anne Knowles, Professor of History, University of Maine; formerly Professor of Geography, Middlebury College
Andreas Kunz, Economic Historian and Sr. Researcher, Institute of European History (Mainz), Germany
Lew Lancaster, Professor Emeritus, Department of East Asian Languages and Cultures, University of California-Berkeley
Gary Lock, Emeritus Fellow, Professor of Archaeology, Department for Continuing Education, University of Oxford, UK
Barney Warf, Professor of Geography and Atmospheric Science, Department of Geography and Atmospheric Science, Kansas University
May Yuan, Ashbel Smith Professor of Geospatial Information Sciences, Geospatial Information Sciences, University of Texas- Dallas



SPIRIT AND PLACE

Our focus: *Spirit & Place is a community initiative managed by the Polis Center at IUPUI that grew out of our Project on Religion and Urban Culture, which looked at how religion and community have shaped our city and region. Its mission since 1996 is to be a catalyst for civic engagement and enduring change through creative collaborations among the arts, humanities, and religion. Through its annual November festival, people-centered community engagement, and year-round activities, Spirit & Place seeds cross-sector collaborations, inspires innovation, and strengthens civic capacity.*

During 2019, Spirit & Place explored the theme of R/EVOLUTION. This theme provided diverse points for inquiry, creativity, and conversation around key questions such as What do history, geography, art, science, astronomy, sociology, religion, political science, and culture teach about both revolution and evolution? What new ways of being, seeing, and doing are blooming and evolving around the world? What contemporary issues—in our backyard and elsewhere—are calling out for revolution?

As of December 2019, Spirit and Place became a separate unit within the IUPUI School of Liberal Arts. Spirit & Place Director Pam Blevins Hinkle notes that Spirit & Place and The Polis Center remain linked by common values of collaboration and community building. “We are grateful to the staff for supporting us through their work, volunteerism and personal financial support,” she said. “It has been an honor to have been part of the Polis family and we look forward to future partnerships.”

Key Accomplishments

We celebrated the 24th Annual Spirit & Place Festival

- Working in collaboration with 114 cultural, civic, and faith-based organizations, the festival’s 32 events featured performances, discussions, exhibits and more on topics

ranging from requiems and science fiction to climate justice and women in politics.

- Our Annual Public Conversation featured 2017 MacArthur Fellow Nikole Hannah-Jones, lead journalist for the New York Times “1619 Project,” in a conversation about reframing America’s origin stories to address systemic injustice.
- A \$1,000 Award of Awesomeness was awarded to the (W)rites of Passage event, a partnership between Inside Out Prison Exchange Program, Indiana Prison Writers Workshop, and Indiana Women’s Prison History Project.
- Festival attendees—of which 42 percent were new—hailed from Marion County (79 percent), contiguous counties (15 percent), other Indiana counties (4 percent), and out of state (2 percent). Audience demographics were 73 percent white, 16 percent Black/African American (a 100 percent increase over three years), 2.8 percent Hispanic / Latinx, with remainder representing seven additional identities.

We continued hosting Civic Saturdays

- These three, one-hour events combined humanities-based readings, poetry, community singing, a civic talk, and small group conversation to nurture a spirit of shared purpose, wrestle with moral questions, and develop a sense of civic character. This program follows the Civic Saturday model created by Eric Liu, founder of Citizens University (Seattle, WA). Good local media coverage was enhanced with a New York Times story.

We began a new project: Mending Circles

- Ten women explored contemplative and arts-based healing practices for potential use in their work with justice-involved women. Participants included those from Project Lia, Craine House, Bellfound Farm, and others. This work was an outgrowth of the Indy Community Innovation

Lab, a national pilot project in 2018 involving Spirit & Place, Kheprw Institute, Groundwork Indy, and other community partners.

Select Presentations

- “Women of Color in Design,” LaShawnda Crowe Storm, Purdue Black Cultural Center Summit, Lafayette, IN. Mar. 30, 2019.
- “The Artist as Problem Solver II,” LaShawnda Crowe Storm, The Joyce Foundation 2019 Creative Placekeeping/Placemaking Summit, Cleveland, OH. Mar. 21-22, 2019.
- “Powerful Conversations on Race,” Erin Kelley, LaShawnda Crowe Storm, Pam Blevins Hinkle, Welcoming Campus Conference, IUPUI, Indianapolis, IN. April 16, 2019.
- “Zombies, Murder, & Other Outrageous Risks Worth Taking,” Erin Kelley, Joint Conference of the Association of the Midwest Museums and Michigan Museum Association. Oct. 2-4, 2019.
- “Powerful Conversations on Race,” Pam Blevins Hinkle, Imagining America Conference, Albuquerque, NM. Oct. 18-20, 2019.

Community Advisors

Major funders and partners for 2019

Lilly Endowment Inc.
Allen Whitehall Clowes Charitable Foundation, Inc.
Butler Arts Center
Bohlsen Group
Indiana Humanities with support from the National Endowment for the Humanities Harrison Center
The Indianapolis Foundation, a CICF fund
Indianapolis Public Library
IU School of Liberal Arts at IUPUI
McGowan Hall
League of Women Voters
The Penrod Society
The Polis Center
SongSquad Indianapolis
Storytelling Arts of Indiana
114 cultural, civic and faith-based organizations

Steering Committee

Beth Perdue Outland, Steering Committee Chair, Vice President, Community Engagement and Strategic Innovation, Indianapolis Symphony Orchestra
Keira Amstutz, President and CEO, Indiana Humanities
Hope Hampton, Executive Director, Project Home Indy
Ken Honeywell, President, Well Done Marketing
Elizabeth Goodfellow, Executive Director, Advancement, IU School of Liberal Arts, IUPUI
Venetta Keefe, Grant Administrator, US Dept. of Transportation-Indiana
Pegg Kennedy, Sales Associate, Tucker Realty
Leslie Kidwell, Director of Development, Vincennes University
David Kosene, President, Kosene and Kosene Development & Management Co., Inc.
Robin Thoman, Managing Partner, Paradox Dental Center
Gail Thomas Strong, Vice President, Community Engagement, WFYI

Emeritus Members

Kevin Armstrong, Chief Mission & Values Officer, IU Health
Vicki Bohlsen, CEO, Bohlsen Group
Jane Henegar, Executive Director, ACLU-Indiana
Bruce Hetrick, Principal, Powerful Appeals
Ken Honeywell, President, Well Done Marketing
Sandy Sasso, Rabbi Emerita, Congregation Beth-El Zedeck
Joyce Sommers, Emeritus President, Indianapolis Art Center
David Wantz, CEO, Independent Colleges of Indiana
Karen Whitney, President, Clarion University
Lynn Youngblood, Provost Emeritus, University of Indianapolis



ORGANIZATIONAL STRUCTURE

The Polis Center at IUPUI operates as a matrix organization, with directors for each area of emphasis who draw from a common pool of technical support staff for specific project needs. We also staff a communications function that supports our major areas of work.

Administration

David Bodenhamer, Executive Director
(also directs the Spatial Humanities area)
Sharon Kandris, Associate Director (also directs the Community Informatics Area)
Melissa Gona, Business Manager
Gloria Harmsen-Hastings, Financial Assistant
Lou Ann Glidden, Administrative Assistant

Community Informatics

Sharon Kandris, Director
Jay Colbert, Data Manager
Kelly Davila, Senior Research Analyst
John Hayes, Data and Quality Assurance Coordinator
Deb Hollon, GIS Analyst
Unai Miguel Andres, GIS and Data Analyst
Rebecca Nannery, Senior Research Analyst
Matt Nowlin, Data and Research Analyst
Naomi Penney, Research Assistant
Kim Sarver, Senior Project Manager

Students:

Jabari Artis, Research Assistant
Jonah Butler, Data Analytics Intern
Victor Creed, Social Media Coordinator
Amrita Datta, Design Intern
Christian Dietmeyer, Informatics Intern
Meenal Jakatdar, Informatics Intern
Zachary Null, Data Analytics Intern
Neha Patil, Informatics Intern
Saket Talware, Informatics Intern
Ross Tepe, Graduate Research Assistant
Akshay Yelmar, UI/UX Intern

Geoinformatics

Jim Sparks, Director
Marianne Cardwell, GIS Project Coordinator
Matthew Riggs, Senior GIS Analyst
Kavya Urs Beerval Ravichandra, GIS Analyst
Kayla Kauffman, GIS Analyst

Student

Melissa Long, Intern (GIS)

Community Health Informatics

Karen Comer, Director

Research Associates

Jeremy Townsley, MA
Patrick Lai, PhD ABD
Amnah Anwar, MPH, MBBS

Research Assistants

Mandeep Dhillon, SolC Graduate Intern
Szu Yu Yang, SolC Graduate Intern
Madison Asbell, MPH Epidemiology Intern
Emma Morone, MPH Epidemiology Intern
Nimra Nayar, Informatics Graduate Intern

Consultants

Rebecca Nannery, MA, Richard M. Fairbanks School of Public Health
Mariana Lopez-Owens, MPH, La Plaza
Bart Caylor, Caylor Solutions

Systems Development

Neil Devadasan, Lead Systems Engineer/
Systems Engineering Manager
James Dowling, Database Administrator
Robert Ferrell, Senior Programmer
John Gona, LAN Technician

Students

Jason Croddy, Computer Science Intern
Lakshmi Shivaram Ponallaghi, Computer Science Intern
Sailesh Vemula, Computer Science Intern

Professional Education

Kevin Mickey, Director

Spirit and Place

Pam Blevins Hinkle, Director
LaShawnda Crowe Storm, Community
Engagement Director
Erin Kelley, Program Director
Janna Thomas, Fundraising Assistant

Communications

Allegra East, Manager
Norma Erickson, Writer/Researcher

SUSTAINABILITY

Our goal is to enter each fiscal year with sufficient income under contract to fund our work for the year. We met this goal for FY2020, and enter FY2021 with contracted income sufficient to meet our obligations for the next year.



Appendix A

Digital Encyclopedia of Indianapolis Advisors

DEOI Steering Committee

David Bodenhamer, Polis
Jackie Nytes, Indy Public Library
Sharon Kandris, Polis
Beth VanAllen, Indy public library
Allegra East, Polis
Matt Nowlin, Polis
Suzanne Hahn, Indiana Historical Society
Keira Amstutz, Indiana Humanities
George Hanlin, Indiana Humanities
Chandler Lighty, Indiana State Archives
and Records Commission
Kristi Palmer, University Library at IUPUI
Ted Frantz, University of Indianapolis
Institute for Civic Leadership & Mayoral
Archives
Justin Clark, Indiana State Library
Sally Childs-Helton, Butler University
Suzanne Stanis, Indiana Landmarks
Casey Pfeiffer, Indiana Historical Bureau/
Indiana State Library
Nicole Poletika, Indiana Historical Bureau/
Indiana State Library

DEOI Civic Advisory Committee Members Co-Chairs

Sarah Evans Barker, Sr. US District Judge
Lacy Johnson, Senior Partner, Ice Miller
Rick Fuson, President, Pacers Sports
& Entertainment

Members

Ellen Annala, previously United Way
Dan Appel, Gregory & Appel
Kevin Armstrong, IU Health
Charles Bantz, IUPUI
Phil Bayt, Ice Miller
Jerry Bepko, Chancellor Emeritus, IUPUI
Phil Borst, Southside veterinarian
Brian Bosma, former Speaker of the House
Bill Browne, Ratio Architects

Tiffany Browne, Historic Indianapolis
A'Lelia Bundles, Author and Public Speaker
Moirra Carlstedt, Indiana Neighborhood
Housing Partnership
Brad Chambers, Buckingham Companies
Molly Chavers, Central Indiana
Community Foundation bod
Murray Clark, Faegre Baker Daniels
William Enright, Retired, Second
Presbyterian and Lake Institute
David Eskenazi, Sandor
Dan Evans, formerly IU Health
Greg Fehribach, The Fehribach Group
Nate Feltman, Indianapolis Business Journal
Claudia Fuentes, Marion County Treasurer
Charlie Garcia, C. Garcia and Associate
Marianne Glick, Glick Philanthropies
Lena Hackett, Community Solutions
Michael Huber, Indy Chamber
Rebecca Hutton, Leadership Indianapolis
Martha Lamkin, Women4Change BOD
Maggie Lewis, City County Council
Karen Lloyd, Community Health Network
Teresa Lubbers, Indiana Commission for
Higher Education
Rose Mays, Professor Emerita- IUPUI
Mark Miles, Penske Entertainment Corp.
Doran Moreland, Ivy Tech
Jim Morris, Pacers Sports & Entertainment
John Myrland, Old National Bank
Jackie Nytes, Indianapolis Public Library
Vop Osili, President-City County Council
William Plater, Chancellor's Professor emeritus
Greg Porter, State Representative
Cherrish Pryor, State Representative
Maria Quintana, Q2U Strategic Advisory Group
David Resnick, Katz, Sapper & Miller
Brent Rockwood, Butler University
Joyce Rogers, VP for Development and
External Relations, IU

Mikal Saahir, Nur-Allah Islamic Center
Sandy Sasso, Women4Change BOD
Jerry Semler, Retired, One America
Yvonne Shaheen, Retired, Long Electric
Rachel Simon, Herbert Simon Family Foundation
K.P. Singh, KP Singh Designs
Adrienne Slash, Community Health Network
Joe Slash, Retired
Maribeth Smith, Maribeth Smith & Associates
Joanna Taft, Harrison Center
James Taylor, John Boner Neighborhood Center
Gene Tempel, IUPUI
Michael Twyman, InExcelsis
Ryan Vaughn, Indiana Sports Corp.
David Wantz, Independent Colleges Indiana
Mike Wells, REI Investments, Inc.
Susan Williams, Retired, Indiana Sports Corp.







The Polis Center

We bring things into perspective.™

The Polis Center
IU School of Informatics and Computing-IUPUI
535 W. Michigan Street | Indianapolis, IN 46202
317.274.2455 | polis.iupui.edu